



innovations with a "difference"

Specifications & feature:

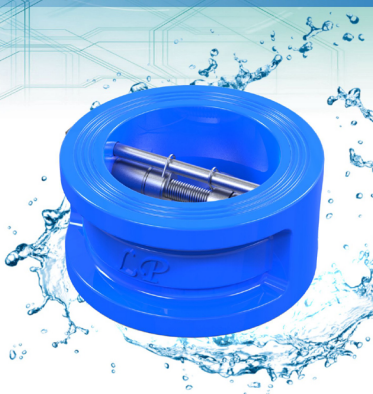
Rigid & Sturdy design with minimum loss of head across the valve.
Perfectly flat seating surfaces for goos sealing.
Preventing entry of foreign body to pump through suction pipe.
Long service life.

Applications:

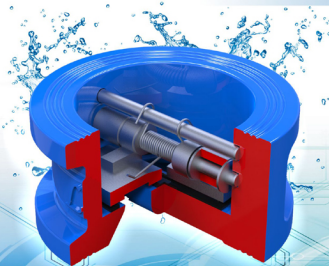
Water Supply System, Fire Water System, Cooling Water,
Chilled/Hot Water System, Boiler Feed Water,
Sea Water, Portable Water, Raw Water Etc.

Design standard: IS-13095, BS-5155

DUAL PLATE CHECK VALVE



ARTICLE NO. : LPV 1033,1034



HYDRO TEST DETAIL

DN	40~400	
NOMINAL PRESSURE MPa	1.0 MPa	1.6 MPa
SHELL TEST MPa	1.5 MPa	2.4 MPa
SEAT TEST MPa	1.1 MPa	1.76 MPa
WORKING TEMPERATURE	<80 °C	
MEDIUM	Water, Waste Water	
MATERIAL	Ductile Iron	
PNEUMATIC SEAT TEST	0.7 MPa	

WWW.LPVALVES.COM

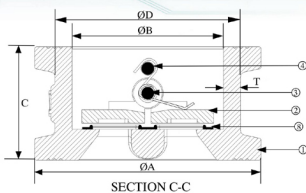


innovations with a "difference"

DUAL PLATE CHECK VALVE

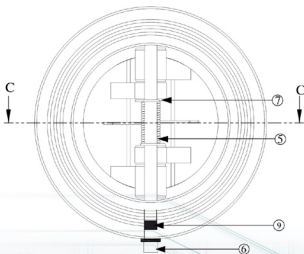
Materials of Construction:

S.No.	PART NAME	Nos. Off	MATERIAL
1.	BODY	1	C.I.
2.	DISC	2	S.S./MS.
3.	HINGE PIN	1	S.S.
4.	STOP PIN	1	S.S.
5.	SPRING	2	S.S.
6.	RETAINER	2	S.S.
7.	WASHER	-	S.S.
8.	SEAT	1	NITRILE/EPDM
9.	SEAT PLUG	2	NITRILE/EPDM



SECTION C-C

Colours Available



Size/ Dimensions

Inches	mm	ØA	ØB	ØC	ØD	T
1/2"	40	84	60	53.5	76	8
2"	50	97	60	54.5	76	8
2 1/2"	65	110	73.8	54	90	8
3"	80	130	88	57	106	9
4"	100	160	113.8	65	134	10
5"	125	194	139.8	71	164	12
6"	150	213	156.7	78	195	14
8"	200	270	218.7	95.5	258	19.5
10"	250	333	273.7	109.5	320	23
12"	300	381	324	143	370	23
14"	350	447	374	184	430	28
16"	400	511	424	191	490	33

WWW.LPVALVES.COM

ARTICLE NO. : LPV 1033,1034